

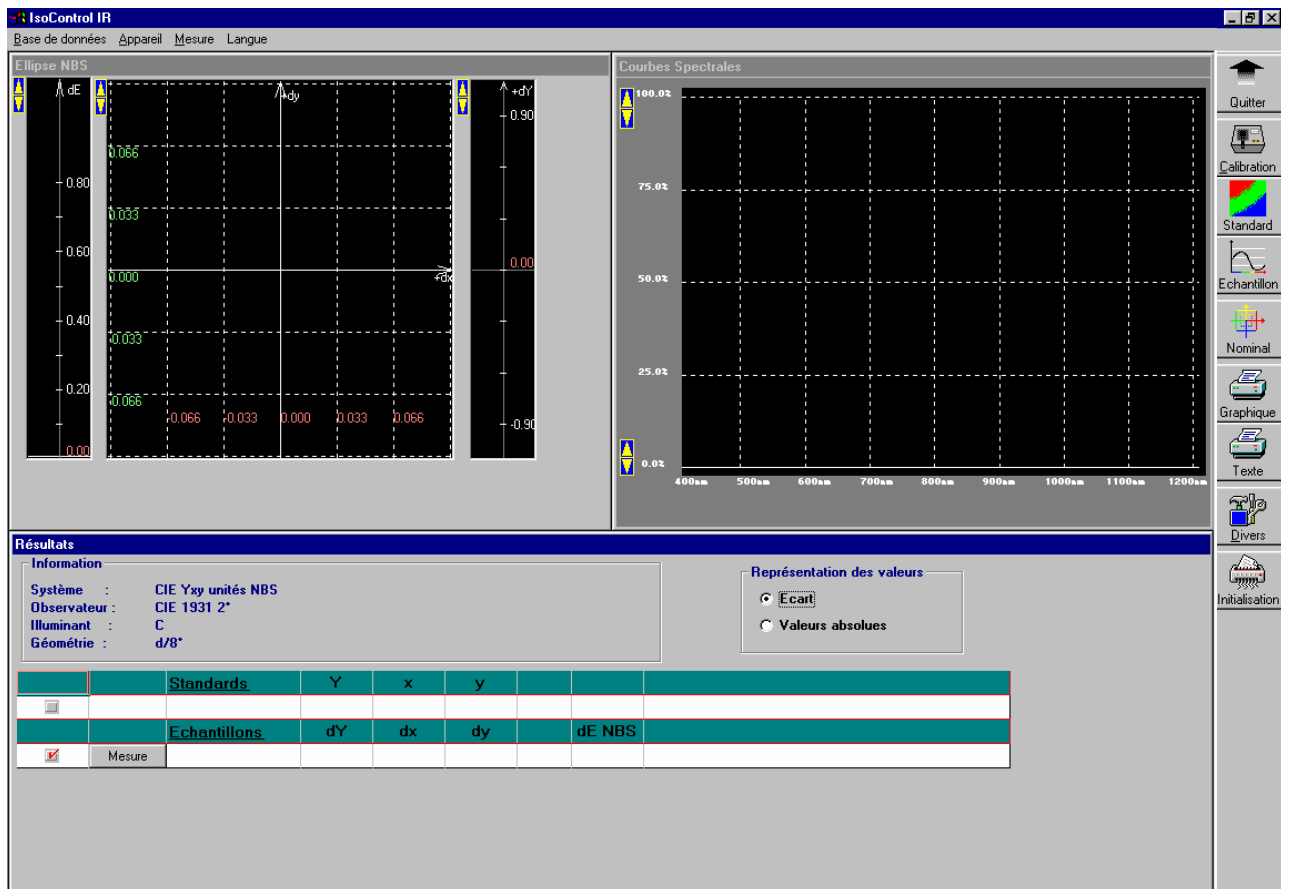
IsoColor Inc.



ISOCONTROL IR

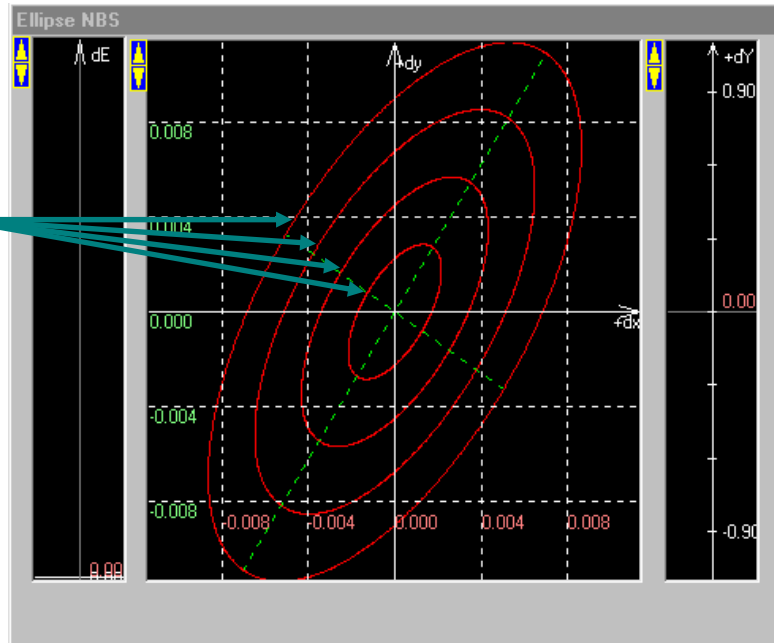
I – Introduction

Most products colors are measured with visible light but some of them need to be controlled in a non-visible spectral light. This is typically the point for suppliers of the Army and in the building area with the use of heat reflectance pigments. These vendors have to comply with the norms followed by the military/administration standards that guaranty colors in the day light and in the night. Fluorescent manufacturers can also benefit from these IR reflectance measurements. **IsoControl IR™** delivers the perfect solution to assure your IR color effects management.

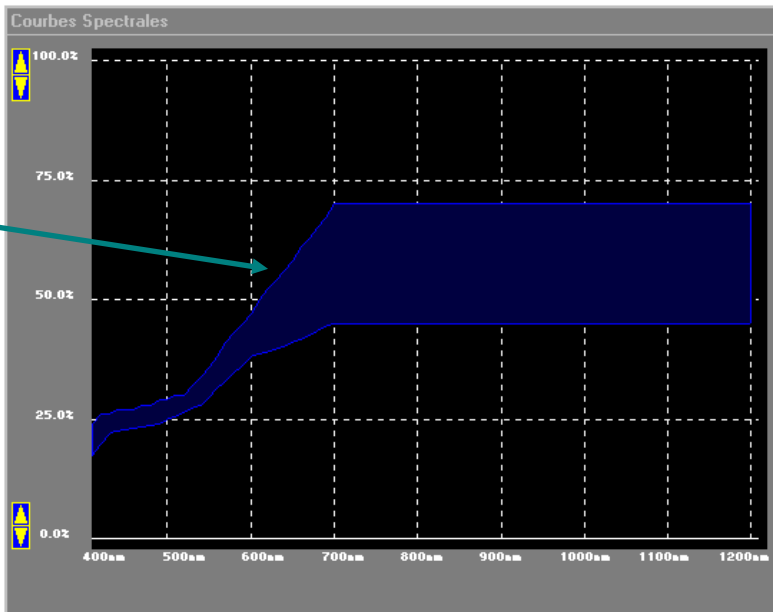


The software enables you to measure and control colors in the visible and near infra red environment. A color will pass if the spectral curve is within the scope and if the batch is within [NBS tolerances](#).

Ellipses of NBS tolerances



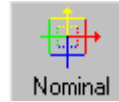
Scope



II – Definition

A **Standard** can be used in 3 ways :

- Standard #1 : Nominal



Nominal standard correspond to Y, x, y theoretical values and is not measured. Therefore it is not linked to a spectral curve on screen but Y, x, y numerical values only.

When the batch is measured it is compared to DY, Dx, Dy and more easily to the difference with the NBS DE.

GABARIT 22x0

Information		Représentation des valeurs			
Système :	CIE Yxy unités NBS	Grand rayon :	0.0032	Delta Y :	0.0058
Observateur :	CIE 1931 2°	Petit rayon :	0.0015		
Illuminant :	C	Angle :	57°		
Géométrie :	d/8°	Ecart unitaire :	-0.0100		
		<input checked="" type="radio"/> Ecart			
		<input type="radio"/> Valeurs absolues			
Standards		Y	x	y	
<input type="checkbox"/>	22x0	33.40	0.3550	0.3430	
Echantillons		dY	dx	dy	dE NBS
<input checked="" type="checkbox"/>	Mesure 34x1-1	-21.29	0.0028	0.0776	44.75
<input type="checkbox"/>	Mesure				

Hors Gabarit

Provided that the standard is within NBS tolerances, we will be able to visualize if the batch is within NBS tolerances ellipses and confirm the PASS/FAIL color evaluation.

- Standard #2 : Secondaire

In this case standard is scanned by spectrophotometer and software displays its reflectance curve as well as Y, x, y values.

