

IsoColor Inc.

ISOEFFECT

SPC SOFTWARE

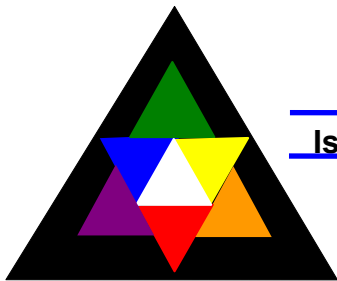
IsoEffect 4.0.1
Windows 9x/NT/2000

29 Rue des Peupliers
F-92 752 Nanterre Cedex
Tel: (33) 01 47 84 00 66
Fax : (33) 01 47 84 33 66

www.spc-software.com

| Colorimetric | Observer | Filter | Cells | d | Wavelength | Thickness | Refractive Index | SD | SD ² | SD ³ | SD ⁴ |
|--------------|----------|--------|-----------|------|------------|-----------|------------------|------|-----------------|-----------------|-----------------|
| 100 | D50 | 2 | SPC000001 | 0.00 | 200.0 | 10.00 | 1.50 | 1.70 | 2.89 | 5.00 | 12.50 |
| 100 | D50 | 2 | SPC000002 | 0.00 | 200.0 | 10.00 | 1.50 | 1.70 | 2.89 | 5.00 | 12.50 |
| 100 | D50 | 2 | SPC000003 | 0.00 | 200.0 | 10.00 | 1.50 | 1.70 | 2.89 | 5.00 | 12.50 |
| 100 | D50 | 2 | SPC000004 | 0.00 | 200.0 | 10.00 | 1.50 | 1.70 | 2.89 | 5.00 | 12.50 |
| 100 | D50 | 2 | SPC000005 | 0.00 | 200.0 | 10.00 | 1.50 | 1.70 | 2.89 | 5.00 | 12.50 |
| 100 | D50 | 2 | SPC000006 | 0.00 | 200.0 | 10.00 | 1.50 | 1.70 | 2.89 | 5.00 | 12.50 |
| 100 | D50 | 2 | SPC000007 | 0.00 | 200.0 | 10.00 | 1.50 | 1.70 | 2.89 | 5.00 | 12.50 |
| 100 | D50 | 2 | SPC000008 | 0.00 | 200.0 | 10.00 | 1.50 | 1.70 | 2.89 | 5.00 | 12.50 |
| 100 | D50 | 2 | SPC000009 | 0.00 | 200.0 | 10.00 | 1.50 | 1.70 | 2.89 | 5.00 | 12.50 |
| 100 | D50 | 2 | SPC000010 | 0.00 | 200.0 | 10.00 | 1.50 | 1.70 | 2.89 | 5.00 | 12.50 |
| 100 | D50 | 2 | SPC000011 | 0.00 | 200.0 | 10.00 | 1.50 | 1.70 | 2.89 | 5.00 | 12.50 |
| 100 | D50 | 2 | SPC000012 | 0.00 | 200.0 | 10.00 | 1.50 | 1.70 | 2.89 | 5.00 | 12.50 |
| 100 | D50 | 2 | SPC000013 | 0.00 | 200.0 | 10.00 | 1.50 | 1.70 | 2.89 | 5.00 | 12.50 |
| 100 | D50 | 2 | SPC000014 | 0.00 | 200.0 | 10.00 | 1.50 | 1.70 | 2.89 | 5.00 | 12.50 |
| 100 | D50 | 2 | SPC000015 | 0.00 | 200.0 | 10.00 | 1.50 | 1.70 | 2.89 | 5.00 | 12.50 |
| 100 | D50 | 2 | SPC000016 | 0.00 | 200.0 | 10.00 | 1.50 | 1.70 | 2.89 | 5.00 | 12.50 |
| 100 | D50 | 2 | SPC000017 | 0.00 | 200.0 | 10.00 | 1.50 | 1.70 | 2.89 | 5.00 | 12.50 |
| 100 | D50 | 2 | SPC000018 | 0.00 | 200.0 | 10.00 | 1.50 | 1.70 | 2.89 | 5.00 | 12.50 |
| 100 | D50 | 2 | SPC000019 | 0.00 | 200.0 | 10.00 | 1.50 | 1.70 | 2.89 | 5.00 | 12.50 |
| 100 | D50 | 2 | SPC000020 | 0.00 | 200.0 | 10.00 | 1.50 | 1.70 | 2.89 | 5.00 | 12.50 |

Goniospectrophotometry matches special effects Colorimetry



IsoColor Inc.

Control the quality of color effect products

✚ Functionalities:

- Calculation of color travel in relation to the choice of the angles of measurement.
- Display of all measurement geometries or pre-selection.
- Customization of Interface Menu.
- Visualization of the diffuse indicator in BRDF mode.

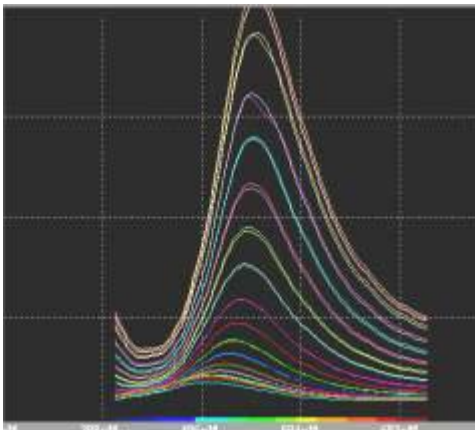


✚ System and color scales

$L^*a^*b^*$, $L^*C^*h^*$, DE*CIE ($L^*a^*b^*$), DE*CIE ($L^*C^*h^*$), DE*CIE94, DECMC and *CIE2000

✚ Graphics :

- Spectral curves screen for all angles measured.
- Absolute values ($L^*a^*b^*$, $L^*C^*h^*$) or relatives ($\Delta L^*\Delta a^*\Delta b^*$, $\Delta L^*\Delta C^*\Delta h^*$).



➡ 2D / 3D representation in CIE space.

✚ Illuminants :

CIE Illuminants (D65, C, A, F...).

➡ Other light sources can be integrated.

✚ Data acquisition:

Selection of measurements made with Revolution™, multi-angles or spectrophotometers.

➡ Measurements geometries are saved with each color measurement.

✚ Data storage :

- Microsoft Access format
- Microsoft Excel readings
- 3D Studio max Export



✚ Compatibility

Interface with Xrite (MA68 2, MA58), Minolta (512M3), and MacBeth (740)

Exclusivity

Screen calibration with IsoCalEcran™ for a true color rendering.



Represented in Canada by Lysack Sales
PHONE: 416.620.9796 FAX: 416.620.6690